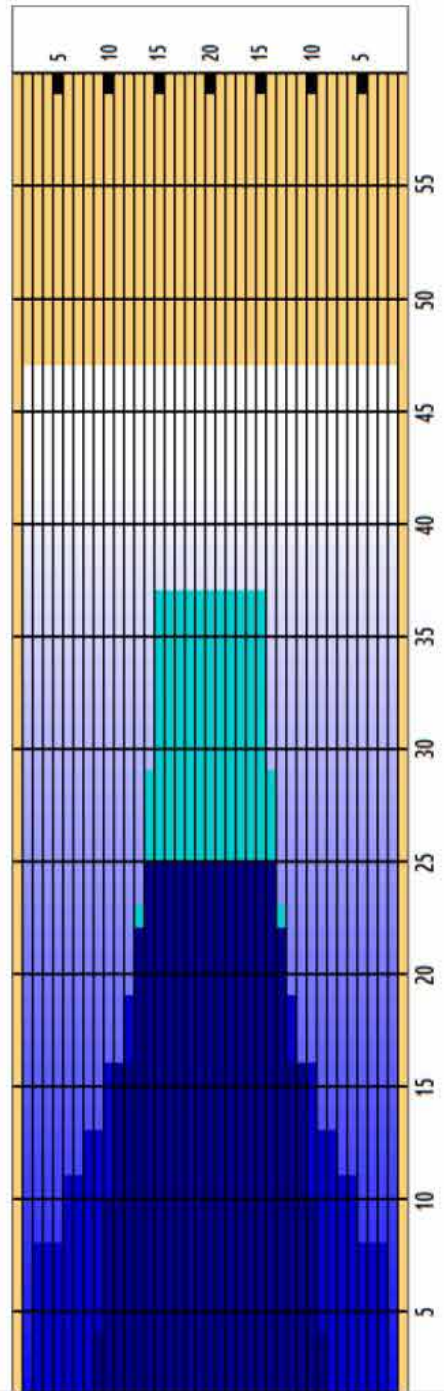


Oil Pattern Distance	47	Reverse Brush Drop	47	Oil Per Board	50 ul
Forward Oil Total	15.85 mL	Reverse Oil Total	7.75 mL	Volume Oil Total	23.6 mL
Tank Configuration	Multi Tank	Tank A Conditioner	CURRENT	Tank B Conditioner	ICE

	START	STOP	LOADS	SPEED	TANK	CROSSED	START	END	FEET	T.OIL
1	5L	5R	1	10	A	31	0.0	0.0	0.0	1550
2	7L	7R	1	10	A	27	0.0	1.4	1.4	1350
3	9L	9R	2	10	A	46	1.4	4.2	2.8	2300
4	10L	10R	3	14	A	63	4.2	10.1	5.9	3150
5	11L	11R	3	14	A	57	10.1	16.0	5.9	2850
6	13L	13R	3	18	A	45	16.0	23.6	7.6	2250
7	14L	14R	2	22	A	26	23.6	29.8	6.2	1300
8	15L	15R	2	26	A	22	29.8	37.1	7.3	1100
9	2L	2R	0	26	A	0	37.1	47.0	9.9	0

	START	STOP	LOADS	SPEED	TANK	CROSSED	START	END	FEET	T.OIL
1	2L	2R	0	26	B	0	47.0	25.0	-22.0	0
2	14L	14R	1	22	B	13	25.0	21.9	-3.1	650
3	13L	13R	1	22	B	15	21.9	18.8	-3.1	750
4	12L	12R	1	22	B	17	18.8	15.7	-3.1	850
5	10L	10R	1	18	B	21	15.7	13.2	-2.5	1050
6	8L	8R	1	18	B	25	13.2	10.7	-2.5	1250
7	6L	6R	1	18	B	29	10.7	8.2	-2.5	1450
8	3L	3R	1	14	B	35	8.2	6.3	-1.9	1750
9	2L	2R	0	14	B	0	6.3	0.0	-6.3	0

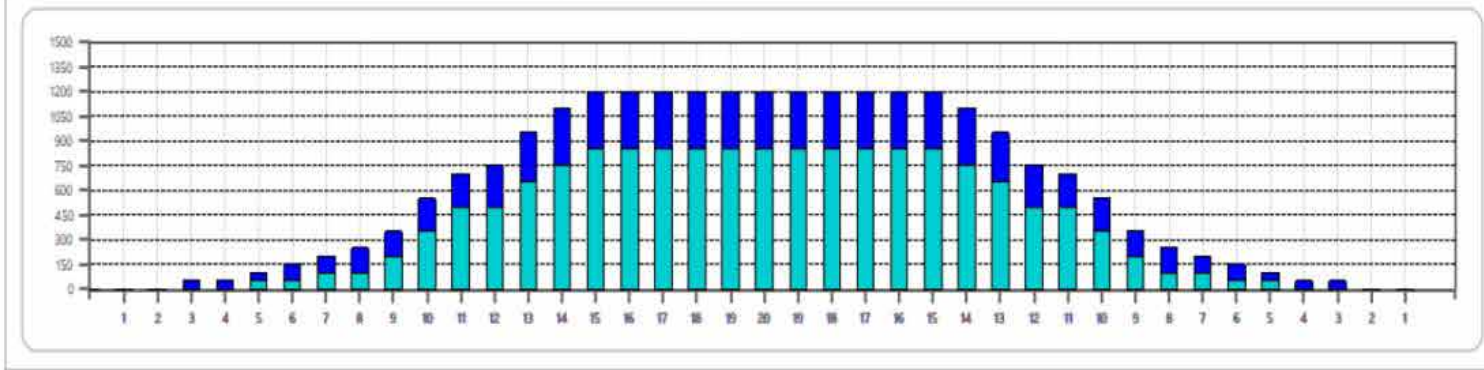


Cleaner Ratio Main Mix                    NA      Forward  
 Cleaner Ratio Back End Mix            NA      Reverse  
 Cleaner Ratio Back End Distance      NA      Combined

Buffer RPM: 4 = 700 | 3 = 500 | 2 = 200 | 1 = 100



Item	3L-7L-18L-18R	8L-12L-18L-18R	13L-17L-18L-18R	18L-18R-17R-13R	18L-18R-12R-8R	18L-18R-7R-3R
Description	Outside:Middle	Middle:Middle	Inside:Middle	Middle:Inside	Middle:Middle	Middle:Outside
Track Zone Ratio	10.91	2.31	1.06	1.06	2.31	10.91





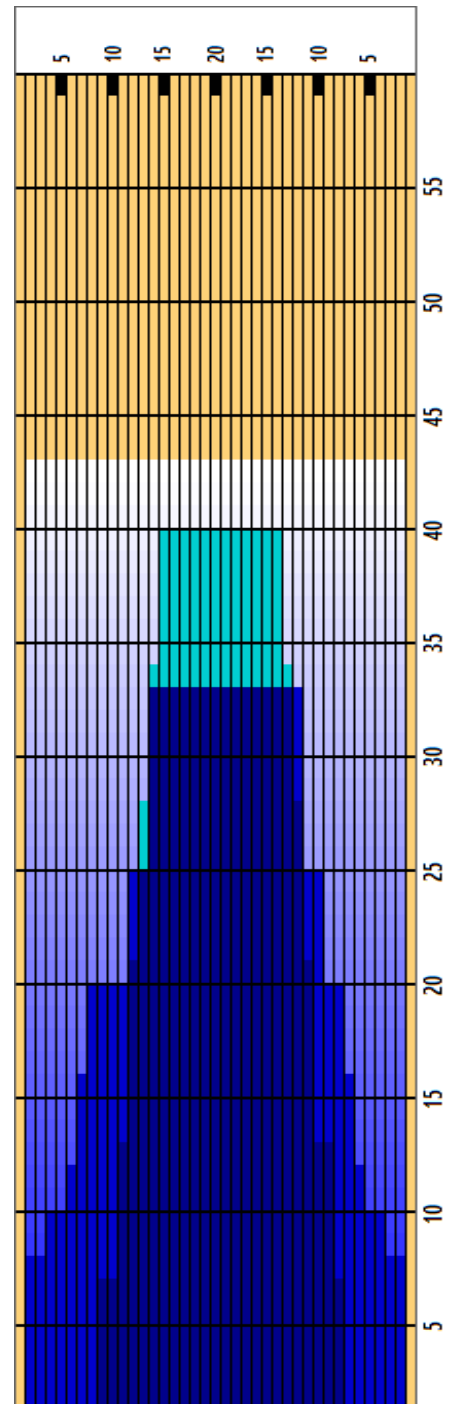
6/7(日) HI-SPフェスティバル&STORMフェア「アマチュアトーナメント」  
 【MKボウル上賀茂】レーンコンディション



Oil Pattern Distance	43	Reverse Brush Drop	39	Oil Per Board	50 ul
Forward Oil Total	18.15 mL	Reverse Oil Total	15.25 mL	Volume Oil Total	33.4 mL
Tank Configuration	N/A	Tank A Conditioner	PRODIGY	Tank B Conditioner	-

	START	STOP	LOADS	MICS	SPEED	TANK	CROSSED	START	END	FEET	T.OIL
1	2L	2R	2	50	14	A	74	0.0	1.9	1.9	3700
2	9L	8R	3	50	14	A	72	1.9	7.8	5.9	3600
3	11L	9R	3	50	14	A	63	7.8	13.7	5.9	3150
4	12L	11R	3	50	18	A	54	13.7	21.3	7.6	2700
5	13L	12R	3	50	18	A	48	21.3	28.9	7.6	2400
6	14L	13R	2	50	18	A	28	28.9	34.0	5.1	1400
7	15L	14R	2	50	22	A	24	34.0	40.2	6.2	1200
8	2L	2R	0	50	22	A	0	40.2	43.0	2.8	0

	START	STOP	LOADS	MICS	SPEED	TANK	CROSSED	START	END	FEET	T.OIL
1	2L	2R	0	50	30	A	0	43.0	33.0	-10.0	0
2	14L	12R	3	50	18	A	45	33.0	25.4	-7.6	2250
3	12L	10R	3	50	14	A	57	25.4	19.5	-5.9	2850
4	8L	8R	2	50	14	A	50	19.5	15.6	-3.9	2500
5	7L	7R	2	50	14	A	54	15.6	11.7	-3.9	2700
6	6L	6R	1	50	14	A	29	11.7	9.8	-1.9	1450
7	4L	4R	1	50	14	A	33	9.8	7.9	-1.9	1650
8	2L	2R	1	50	14	A	37	7.9	6.0	-1.9	1850
9	2L	2R	0	50	14	A	0	6.0	0.0	-6.0	0



Cleaner Ratio Main Mix                    NA      Forward  
 Cleaner Ratio Back End Mix            NA      Reverse  
 Cleaner Ratio Back End Distance      NA      Combined  
 Buffer RPM: 4 = 700 | 3 = 500 | 2 = 200 | 1 = 100



Item	3L-7L:18L-18R	8L-12L:18L-18R	13L-17L:18L-18R	18L-18R:17R-13R	18L-18R:12R-8R	18L-18R:7R-3R
Description	Outside:Middle	Middle:Middle	Inside:Middle	Middle: Inside	Middle:Middle	Middle:Outside
Track Zone Ratio	6.74	2.25	1.06	1.01	1.67	6.74

